

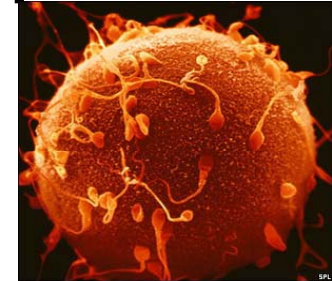
# Patient safety in Assisted Conception

Richard Ajayi FRCOG



Certified by:

**TÜV**  
AUSTRIA



### Introduction

- Our patients are becoming more aware of the importance of quality in healthcare delivery.
- This is supported by the millions of dollars Nigerians spend annually on receiving healthcare abroad.
- There are more IVF treatment cycles carried out on Nigerians abroad than carried out in Nigeria.
- The Bridge Clinic was set up in 1999 with the objective of providing the same standards of IVF treatment available to Nigerians abroad in Nigeria.
- We set up the clinic using the Human fertilisation and Embryology authority (HFEA) guidelines as our benchmark.
- We implemented a quality management system certified by TUV Austria in 2004.



Certified by:

**TUV**  
AUSTRIA

## Process definition and control

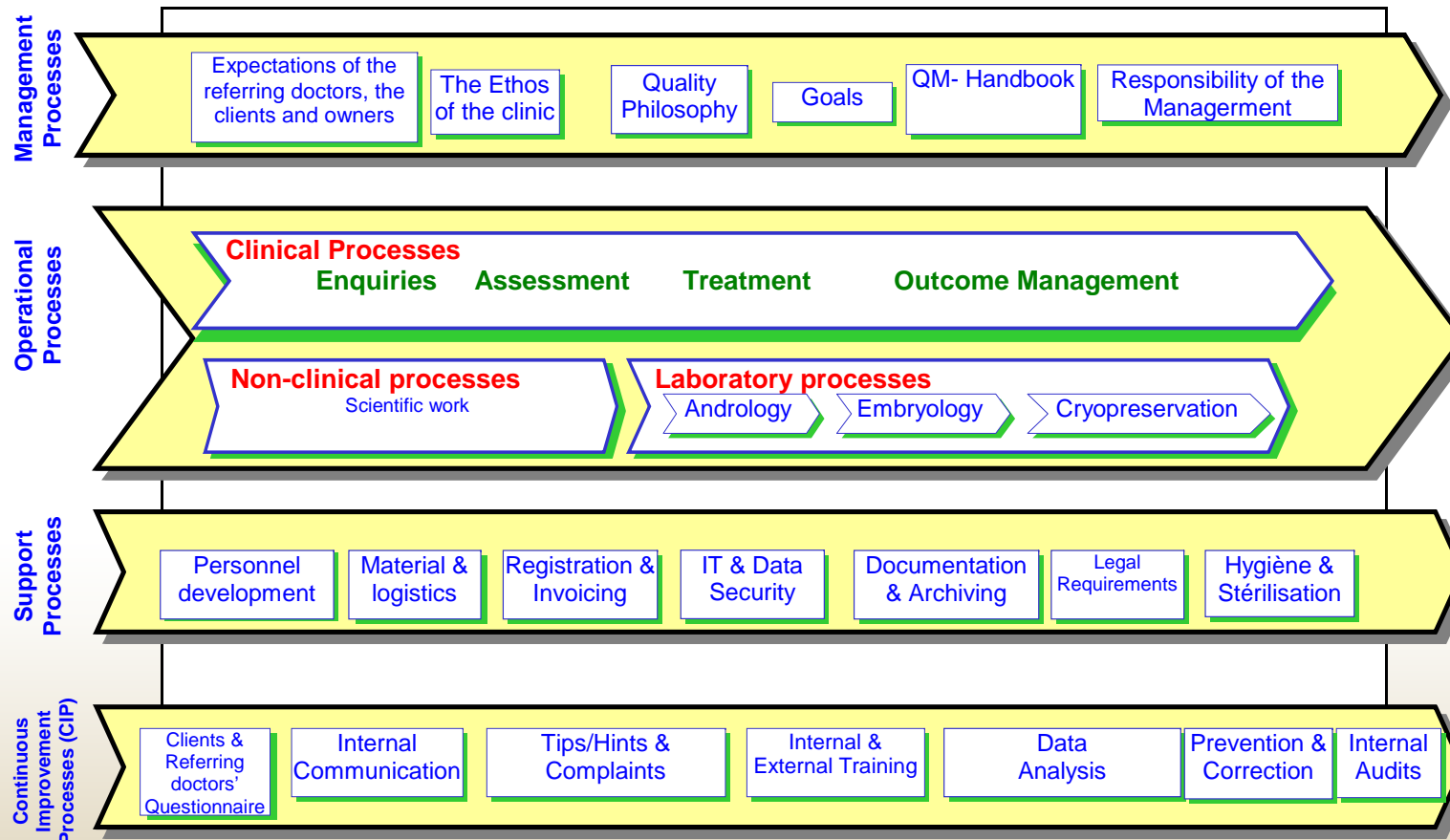
<p>The Theoretical Model transformed into</p>	<p>Schematic picture</p>
<p>The Process Model</p> <p>This picture on the right is a theoretical model and below this theoretical model we have converted this model to represent our workflow at The Bridge Clinic.</p> <p>In our case, the process is triggered by a couple either referring themselves or being referred by another gynaecologist (input). The main process consists of reception of clients, assessment, treatment and outcome management. The output is a pregnant or satisfied couple even though they are not pregnant.</p>	<p>Process of Treatment</p> <p>Example: Referral System</p> <p>Example: Pregnant or Satisfied couple</p>

Process definition,

Standard operating procedures,

Internal audits

## Process definition and control





Clinic	Theatre	Laboratory
Hygiene and infection plan: Leather upholstery, disposable consumables, cleaning policies, quarterly shutdown for cleaning, clean air systems, infection screening policy, waste disposal policy.		
Confidentiality <ul style="list-style-type: none"> <li>• Discretion line</li> <li>• DynaMed</li> <li>• Screen savers</li> <li>• Signatures</li> </ul>	Life support systems – oxygen, defibrillators, pulse oximeter, CPR training and emergency plan on the wall.	Control of media shipping <ul style="list-style-type: none"> <li>• Cold chain management</li> </ul>
Safe stimulation protocols	Competence certification	Prevention of gamete mix up
Expectation management – informed consent	Emergency drugs validation system	Systems validation
Cutting edge state of the art services.		System shutdown plan - data logging an recovery systems e.g. Low level
Emotional management		
Audit verification and publishing our results of treatment.		



Certified by:

Area	What could be wrong	What to do
Clinical	Patient collapses	See emergency SOP
	OHSS	OHSS Protocol
	Loss of property	Information sheet Report to Admin Manager
	Fall on stairs	Emergency signs

#### LABORATORY

##### CRYOBANK

Area	What could be wrong	What to do
Liquid Nitrogen tank	Consistently low operating pressure on gauge	Replace relief valve, check for leaks and repair.
Dewars	Monitor is off or LED light not blinking	Check source of power supply and switch on if off.
	Visual and audible alarms sounds continuously	Switch off alarm by pressing the black knob. Check the level of liquid Nitrogen and top-up if necessary.

##### ANDROLOGY

Area	What could be wrong	What to do
Phase Contrast Microscope	Power does not come on when switched on.	Check source of power supply and connection. Check lamp and replace if burnt.
	Light Flickers	Check that lamp is securely in its socket.
Centrifuge	Error message on display. E.g. "E-07", "E-21"	Refer to the Labofuge manual and take appropriate steps as indicated in the manual.

##### EMBRYOLOGY

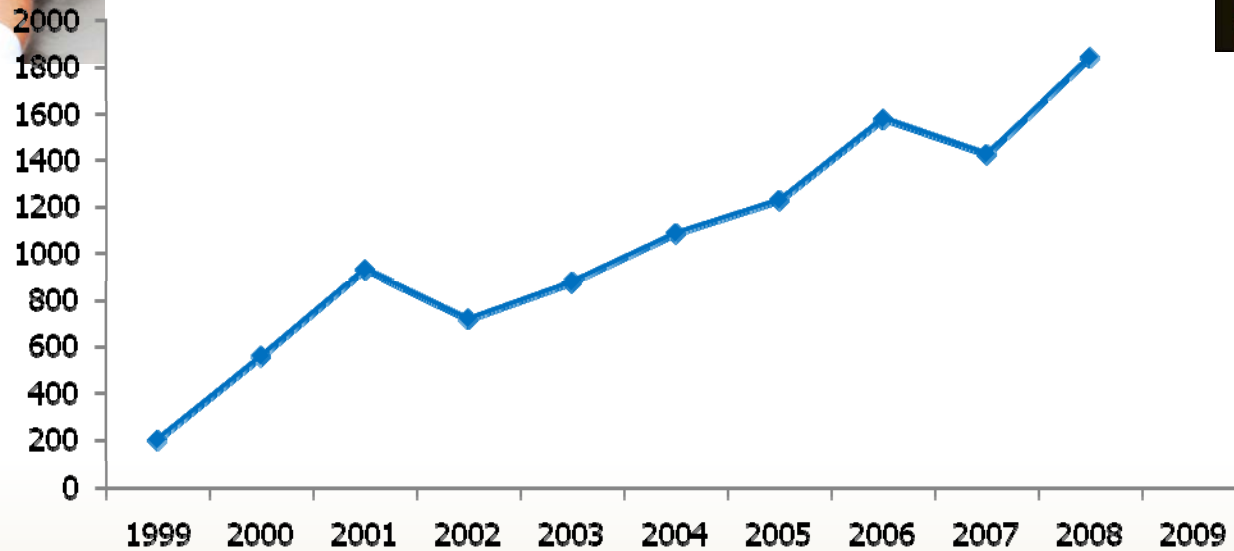
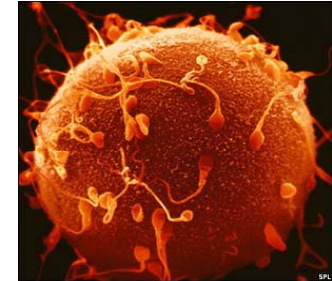
Area	What could be wrong	What to do
Incubator	Shut down	Check source of power supply. Ensure proper contact and connection.
	Contamination	Drain water and Wipe down with 70% alcohol and refill with at least 4 liters of sterile water.

# The Bridge Clinic



## Conclusion

### Enquiries



◆ Enquiries



Certified by:

